



KEY CONSIDERATIONS IN COMMERCIALIZATION OF SUBSISTENCE FISHERIES

Marisa Kashorte

OVERVIEW OF PRESENTATION

- The South African Coast/ Fisheries
- Defining Subsistence and Commercial Fisheries
- Factors determining the move to commercialization
- Evolution of Subsistence Fisheries – the SA case

The 3000km South African Coastline



Dunes,
Beaches,
Resources (fisheries) &
indigenous plant species

Estuaries

Sandy and Rocky shores,
Marine life,
Invertebrates,

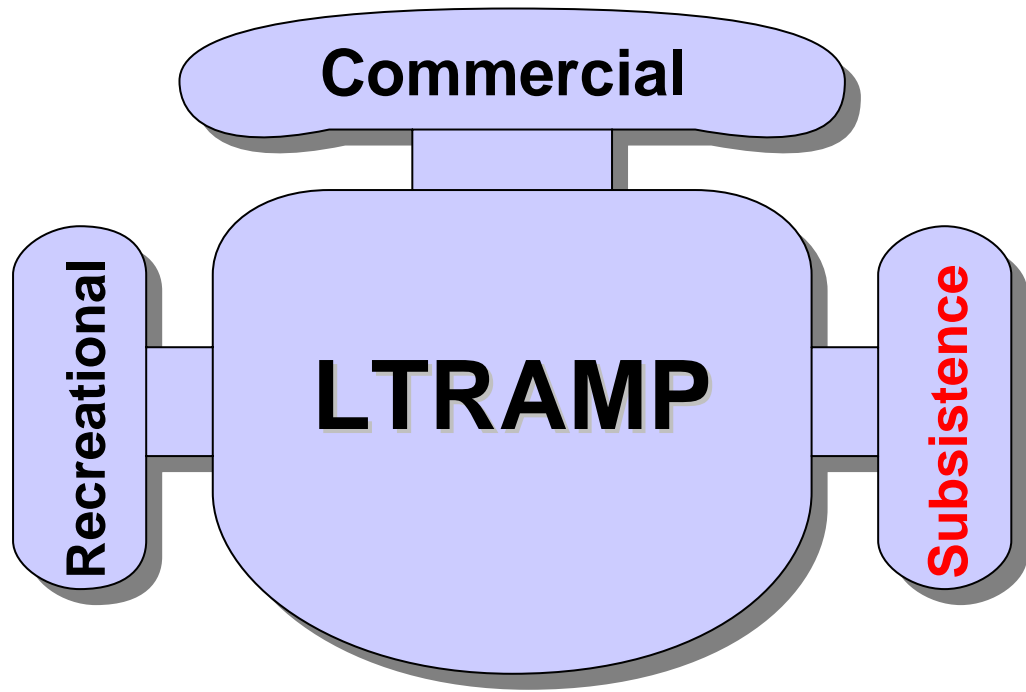
Lagoons

Diverse Communities





South African Fisheries



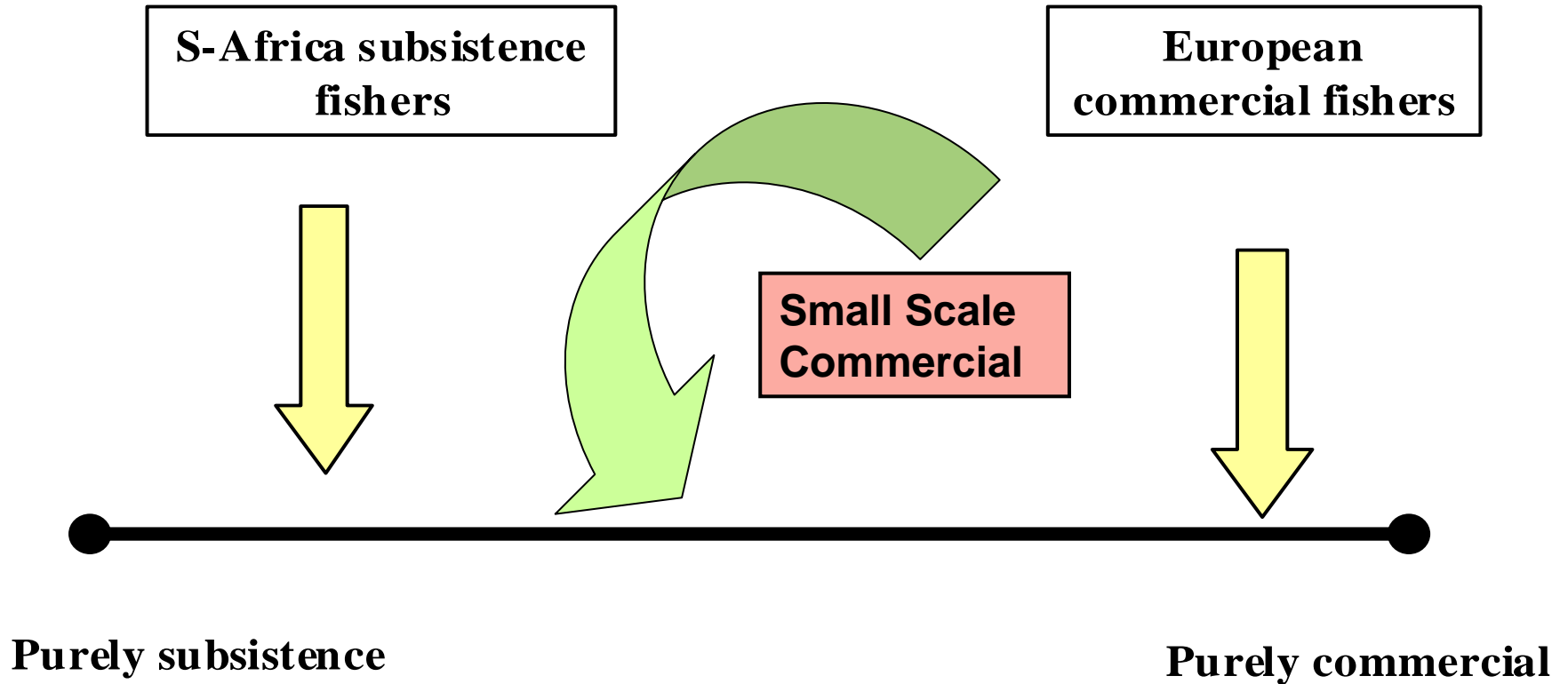


South African Fisheries

Commercial, Recreation and Subsistence

- 2005 A new management of fisheries – *Long Term Rights Allocation Process*
- Subsistence fisheries – formally recognised in 1998 through MLRA.
- Transformed substantially in 2004 with the allocation of high value resources to sector.
- High indication of Subsistence Fishers to progress into the next level of fisheries ensued talks to divide sector into SF and SSC

Subsistence/commercial continuum



IMPORTANT DEFINITIONS

- **Subsistence fisher** = a fisher that fishes for own (household and dependant) consumption.
- **Subsistence fishing community** = a group of such fishers and associated activities.
- **Commercial fishing** is when fish is sold for profit.
- **Commercialization** is converting subsistence activities into commercial activities.





Social Investment in Fisheries

Enterprise Development/
Local Economic Development

Employment Creation/
Alternative Livelihoods

Increased Access to
Trade in Previously
Marginalised
Fisheries Areas

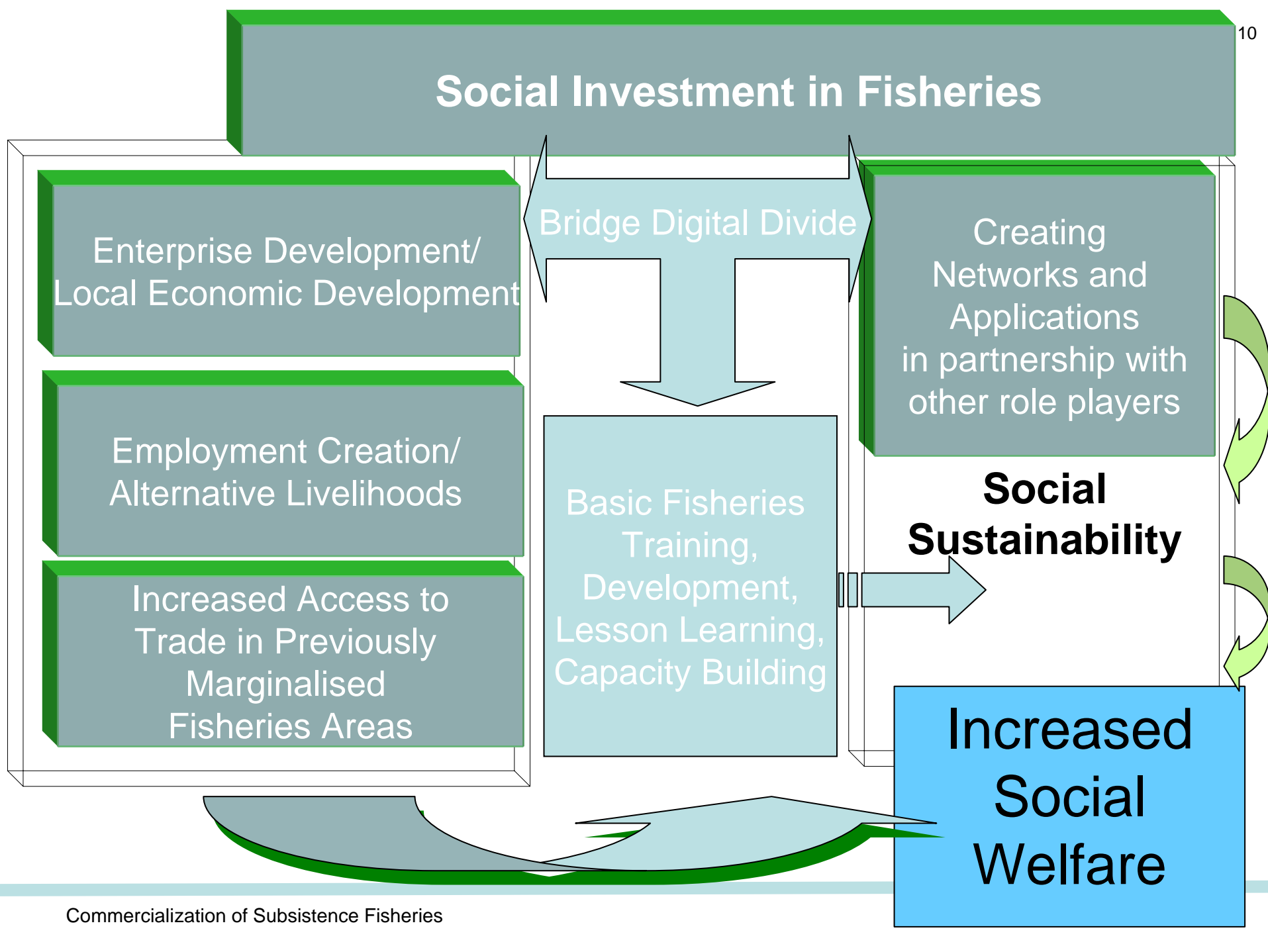
Bridge Digital Divide

Creating
Networks and
Applications
in partnership with
other role players

Basic Fisheries
Training,
Development,
Lesson Learning,
Capacity Building

**Social
Sustainability**

**Increased
Social
Welfare**



CRITERIA FOR FISHERY COMMERCIALISATION

- Sound fisheries management regime
- An appropriate allocation of rights
- Strong social and community structure
- Good knowledge and understanding

(Arnason & Kashorte, 2004)



COMMERCIALISATION – A PRACTICAL APPROACH

1. Formulate the general policy of commercialisation
2. Announce the policy
3. Invite the applications
4. Classify communities i.t.o readiness (ready, promising candidates, not ready)
5. Implementation

(Arnason & Kashorte, 2004)

FACTORS LED TO SEPARATING OF SUBSISTENCE AND SMALL SCALE COMMERCIAL FISHERIES

- Small-scale commercial fishers distinguished in broader commercial sector by
 - (i) comparatively small size of their operations &
 - (ii) day-to-day involvement by the owner in the enterprise (including active involvement in harvesting or processing).
- A common characteristics of these fisheries is involve low capital investment and low turnover; the resources they are likely to access are near shore, are of high value and as such are considered unsuitable for subsistence fishing.

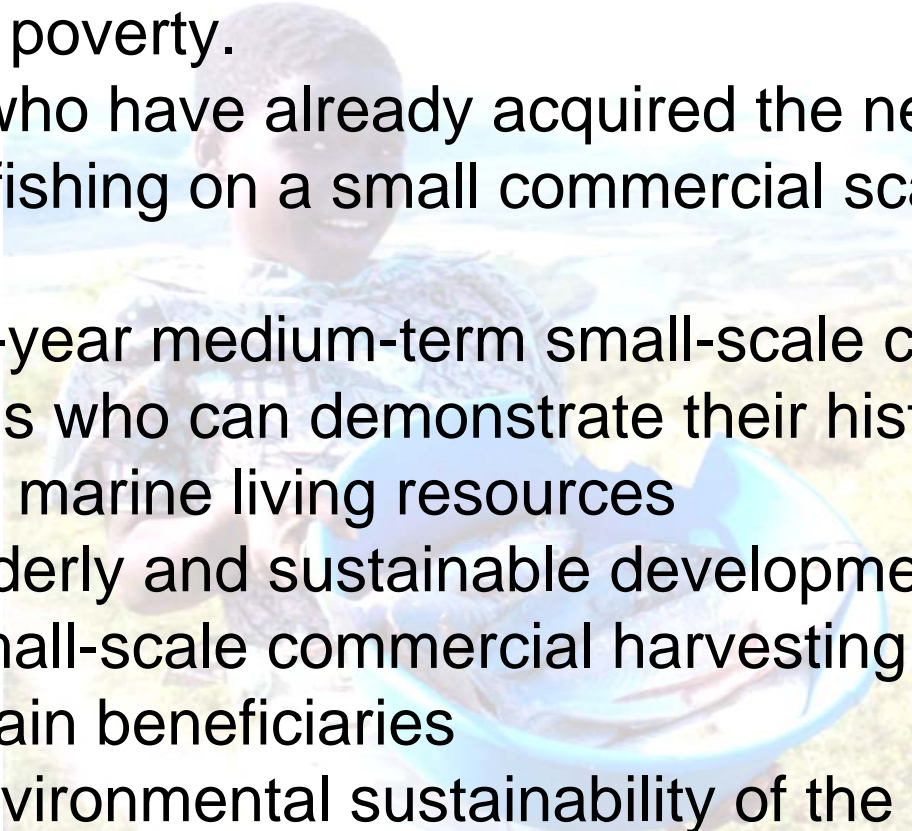
PROGRESS IN SOUTH AFRICA

- DEAT acknowledgement of separating the two sectors
- Rigorous Consultation of Development of Policy for Subsistence and SSC
- Development of two Draft Policies for 2 sectors –
- Adopted/ Translated into 4 languages
- Allocation of rights
- 4 year medium term in the Fisheries

Allocation Process



THE OBJECTIVES OF THE POLICIES

- Provide formal access to small-scale commercial fishers and alleviate poverty.
 - Uplift fishers who have already acquired the necessary skills and experience for fishing on a small commercial scale to generate an income;
 - Grant four (4)-year medium-term small-scale commercial fishing rights to persons who can demonstrate their historical and cultural dependency on marine living resources
 - Ensure the orderly and sustainable development of fisheries identified for small-scale commercial harvesting - local coastal communities main beneficiaries
 - Ensure the environmental sustainability of the resources.
- 

THE OBJECTIVES OF THE POLICIES

The policy SSC makes provision for those fishers who received exemptions to harvest marine living resources on a subsistence basis during the period 2000 to 2005.

However, applicants who can demonstrate their historical, cultural and socio-economic dependency on marine living resources to be allocated under this policy may be considered.

The availability of marine living resources in the specific areas will determine whether any new entrants or participants be allowed to harvest a particular resource.

THANK YOU

